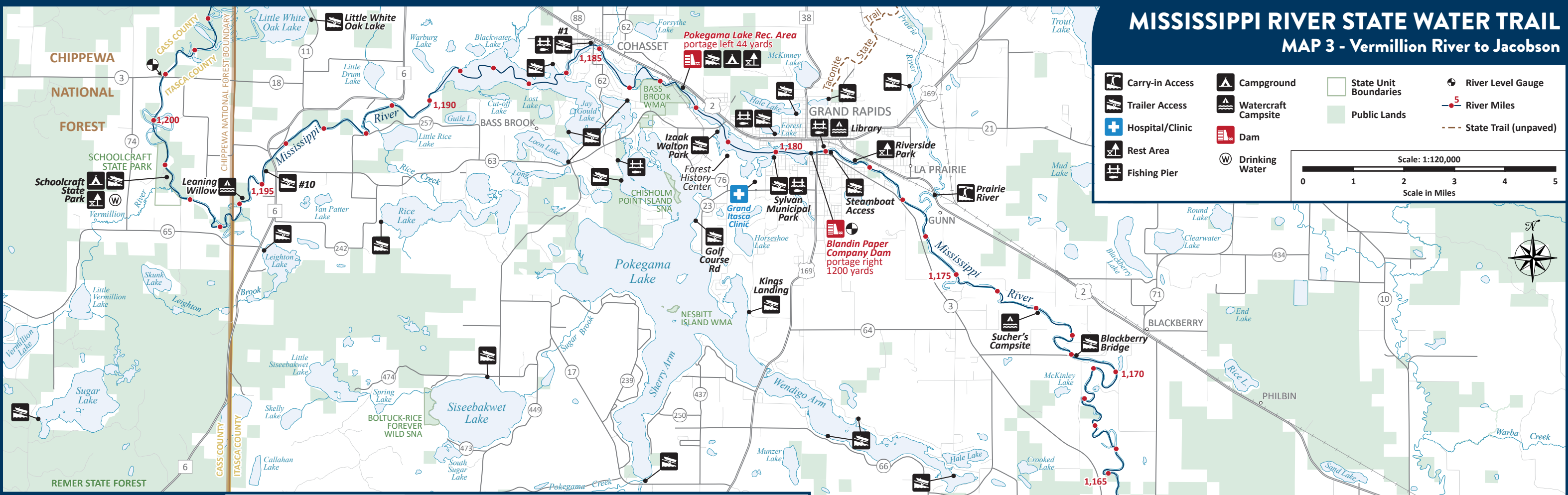


MISSISSIPPI RIVER STATE WATER TRAIL

MAP 3 - Vermillion River to Jacobson

Carry-in Access	Campground	State Unit Boundaries	River Level Gauge
Trailer Access	Watercraft Campsite	Public Lands	River Miles
Hospital/Clinic	Dam		State Trail (unpaved)
Rest Area	Drinking Water		
Fishing Pier			

Scale: 1:120,000
Scale in Miles: 0 1 2 3 4 5



ROUTE DESCRIPTION

River miles 1,203 to 1,136 (67 miles)

- (R) and (L) are right and left banks of the river when facing downstream.
Red text indicates caution areas.
- Continued on Map 2: Mississippi River State Water Trail Cass Lake to Vermillion River*
- 1199.5-1198.2(R) Schoolcraft State Park: Trailer access, rest area, campground, drinking water.
 - 1196 (L) Leaning Willow: Campsite.
 - 1194.7 (R) #10: Trailer access.
 - 1191.8 (R) Rice Lake Creek confluence.
 - 1191 (L) Little Drum Lake Creek confluence.
 - 1187 Blackwater Lake: The Mississippi enters the Pokegama Dam reservoir.
 - 1185.2 (L) #1: Trailer access and fishing pier.
 - 1185 (L) City of Cohasset.
 - 1183.5-1182.1 (R) Bass Brook WMA.
 - 1182.4 (L) **Pokegama Lake Rec. Area:** Dam, trailer access, campground, picnic area, rest area. Portage left 44 yards. Portage service offered at Pokegama Dam.
 - 1181.3 (R) Izaak Walton Park: Trailer access.
 - 1180.8 (R) Minnesota Forest History Center.
 - 1180.4 (R) Grand Itasca Clinic.
 - 1180.1 (R) Sylvan Municipal Park: Trailer access and fishing pier.
 - 1179.3 (R) **Blandin Paper Company Dam:** portage right 1200 yards.
 - 1179.1 US Highway 169 bridge.

- 1179 (L) Grand Rapids Library: Campsite, fishing pier.
- 1178.9 (R) Steamboat Access: Trailer access.
- 1178.3 (R) Riverside Park.
- 1176.5 (L) Prairie River confluence. Carry-in access at US Highway 2.
- 1173 (R) Sucher's Campsite.
- 1170.9 (L) Blackberry Bridge: Trailer access.
- 1163.9 (R) Herb Beer's: Trailer access.
- 1162.3 (L) Blackberry: Campsite.
- 1161.4 (L) Co. Rd. 72: Trailer access.
- 1152.5 (R) Split Hand Creek confluence.
- 1150.2 (L) Swimming Bear: Campsite. Takeout upstream.
- 1145.5 (R) County Line: Trailer access.
- 1140.6 (R) Jacobson Campground: Trailer access and drinking water.
- 1138.1 (R) Swan River confluence.
- 1137.6 (R) Jacobson Wayside Rest. Upstream of MN Highway 200.

Continued on Map 4: Mississippi River State Water Trail Jacobson to Aitkin