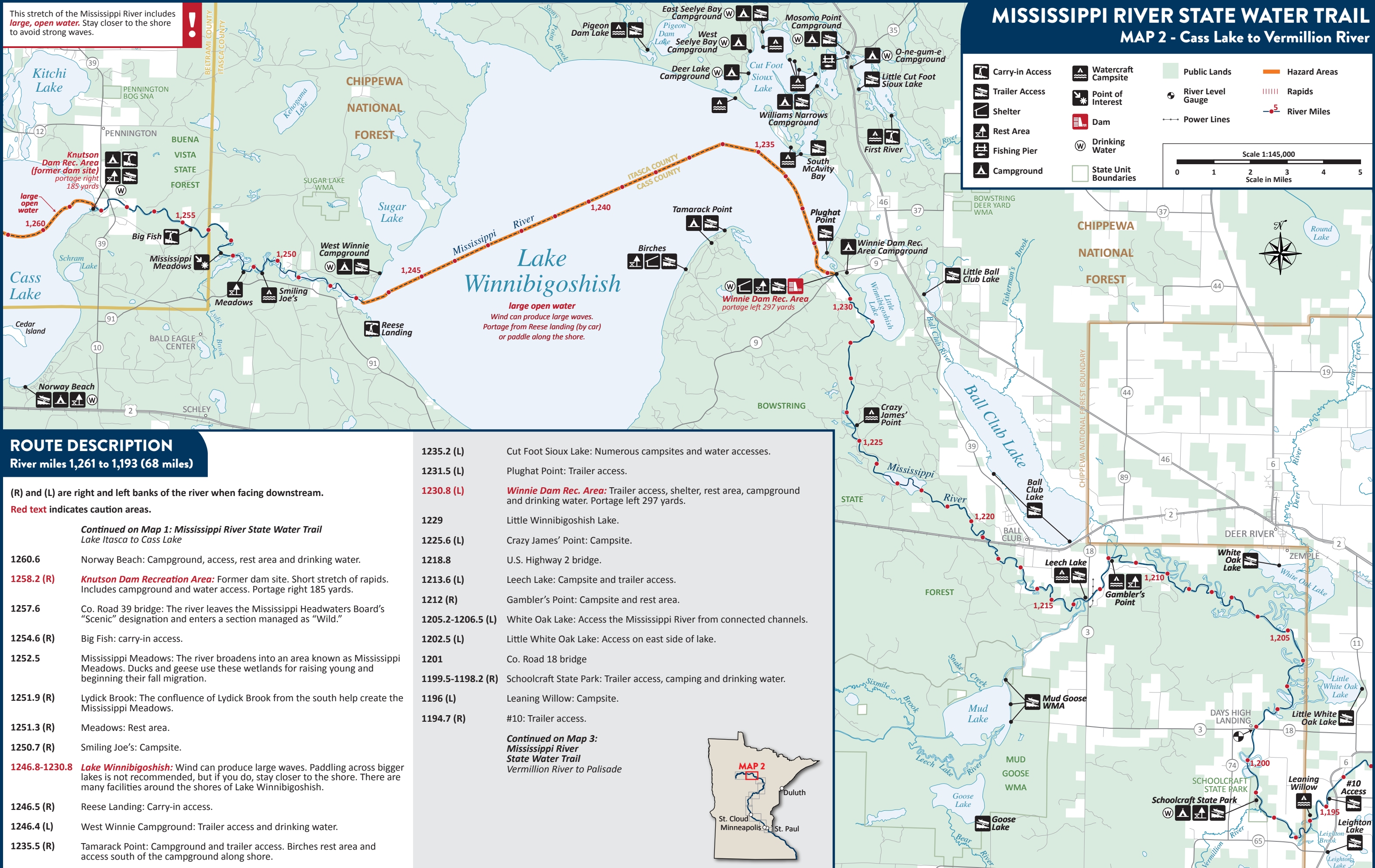


This stretch of the Mississippi River includes **large, open water**. Stay closer to the shore to avoid strong waves.



BETHEMIA COUNTY  
ITASCA COUNTY



## ROUTE DESCRIPTION

River miles 1,261 to 1,193 (68 miles)

(R) and (L) are right and left banks of the river when facing downstream.

Red text indicates caution areas.

*Continued on Map 1: Mississippi River State Water Trail  
Lake Itasca to Cass Lake*

1260.6 Norway Beach: Campground, access, rest area and drinking water.

1258.2 (R) **Knutson Dam Recreation Area:** Former dam site. Short stretch of rapids. Includes campground and water access. Portage right 185 yards.

1257.6 Co. Road 39 bridge: The river leaves the Mississippi Headwaters Board's "Scenic" designation and enters a section managed as "Wild."

1254.6 (R) Big Fish: carry-in access.

1252.5 Mississippi Meadows: The river broadens into an area known as Mississippi Meadows. Ducks and geese use these wetlands for raising young and beginning their fall migration.

1251.9 (R) Lydick Brook: The confluence of Lydick Brook from the south help create the Mississippi Meadows.

1251.3 (R) Meadows: Rest area.

1250.7 (R) Smiling Joe's: Campsite.

1246.8-1230.8 **Lake Winnibigoshish:** Wind can produce large waves. Paddling across bigger lakes is not recommended, but if you do, stay closer to the shore. There are many facilities around the shores of Lake Winnibigoshish.

1246.5 (R) Reese Landing: Carry-in access.

1246.4 (L) West Winnie Campground: Trailer access and drinking water.

1235.5 (R) Tamarack Point: Campground and trailer access. Birches rest area and access south of the campground along shore.

1235.2 (L) Cut Foot Sioux Lake: Numerous campsites and water accesses.

1231.5 (L) Plughat Point: Trailer access.

1230.8 (L) **Winnie Dam Rec. Area:** Trailer access, shelter, rest area, campground and drinking water. Portage left 297 yards.

1229 Little Winnibigoshish Lake.

1225.6 (L) Crazy James' Point: Campsite.

1218.8 U.S. Highway 2 bridge.

1213.6 (L) Leech Lake: Campsite and trailer access.

1212 (R) Gambler's Point: Campsite and rest area.

1205.2-1206.5 (L) White Oak Lake: Access the Mississippi River from connected channels.

1202.5 (L) Little White Oak Lake: Access on east side of lake.

1201 Co. Road 18 bridge

1199.5-1198.2 (R) Schoolcraft State Park: Trailer access, camping and drinking water.

1196 (L) Leaning Willow: Campsite.

1194.7 (R) #10: Trailer access.

*Continued on Map 3:  
Mississippi River  
State Water Trail  
Vermillion River to Palisade*

