

ROUTE DESCRIPTION

River miles 37 to 0 (37 miles)

(R) and (L) are right and left banks of the river when facing downstream.

Red text indicates caution areas.

Continued on Map 1: Cloquet River State Water Trail
Indian Lake to Island Lake

- 37 **White Side Rapids:** Class II rapids. Steep with standing waves and boulders. Portage right 280 yards.
- 35 (R) Minnesota Power (N): Trailer access and rest area.
- 33.5 Island Lake: Rest area.

ISLAND LAKE DAM TO HIGHWAY 53

Character: Scenic country with good fishing for walleye, smallmouth bass, and brown trout.

Length: 29 miles.

Average run time: 10-15 hours.

Class: Class 1.

Optimal Flow: Above 1.4 at US 53.

Skill Level: Beginner to Intermediate.

Access: North on CR 4 from Duluth, then west on CR 48 to access road that leads to Island Lake Dam.

- 33.4 (L) Trailer access, Island Lake Reservoir.
- 33 (L) Abott Road (E): Trailer access.
- 32.5-30 Several watercraft campsites.
- 28.7 (L) Island Lake Dam Site trailer access.
- 28.6 (L) **Island Lake Dam:** Rest area and carry-in access. Portage left 300 yards
- 28.5 **Class I rapids.**
- 27.4 CR 48 bridge.
- 26.2 (L) Beaverhouse: Watercraft campsite.
- 25.7 (L) Salt Lick: Watercraft campsite.
- 23.6 (R) Inlet to Hunter Lake.
- 22.6 (L) Twin Pines: Watercraft campsite.
- 21.8 (R) Pincherry: Watercraft campsite.
- 21.4 (R) Side Lake.
- 21 (L) Beaver River confluence.
- 20.5 (L) Bachelor Road: Trailer access.
- 19.7 Co. Road 15 bridge.
- 18.5 (L) MCC: Watercraft campsite.
- 18 (R) Us-Kab-Wan-Ka River confluence.
- 18-17.6 **Class I rapids:** No established portage.
- 17.8 Township road bridge.
- 17.3 (L) Old Mule: Watercraft campsite.
- 16.6 (R) Three Island: Watercraft campsite.
- 15.9-15.3 **Class I rapids.**
- 11.9-9.4 **Class I rapids.**
- 11 (R) Chicken Creek confluence.
- 10.4 (R) Hellwig Creek confluence.
- 10.2 US Highway 53 bridges. Rest area and toilets (R), between bridges.
- 10.2 (R) Carry-in access.

ISLAND LAKE DAM TO HIGHWAY 53

Character: Also a scenic stretch with good fishing. Class I-II rapids become numerous close to the St. Louis River.

Length: 11 miles

Average run time: 5 hours

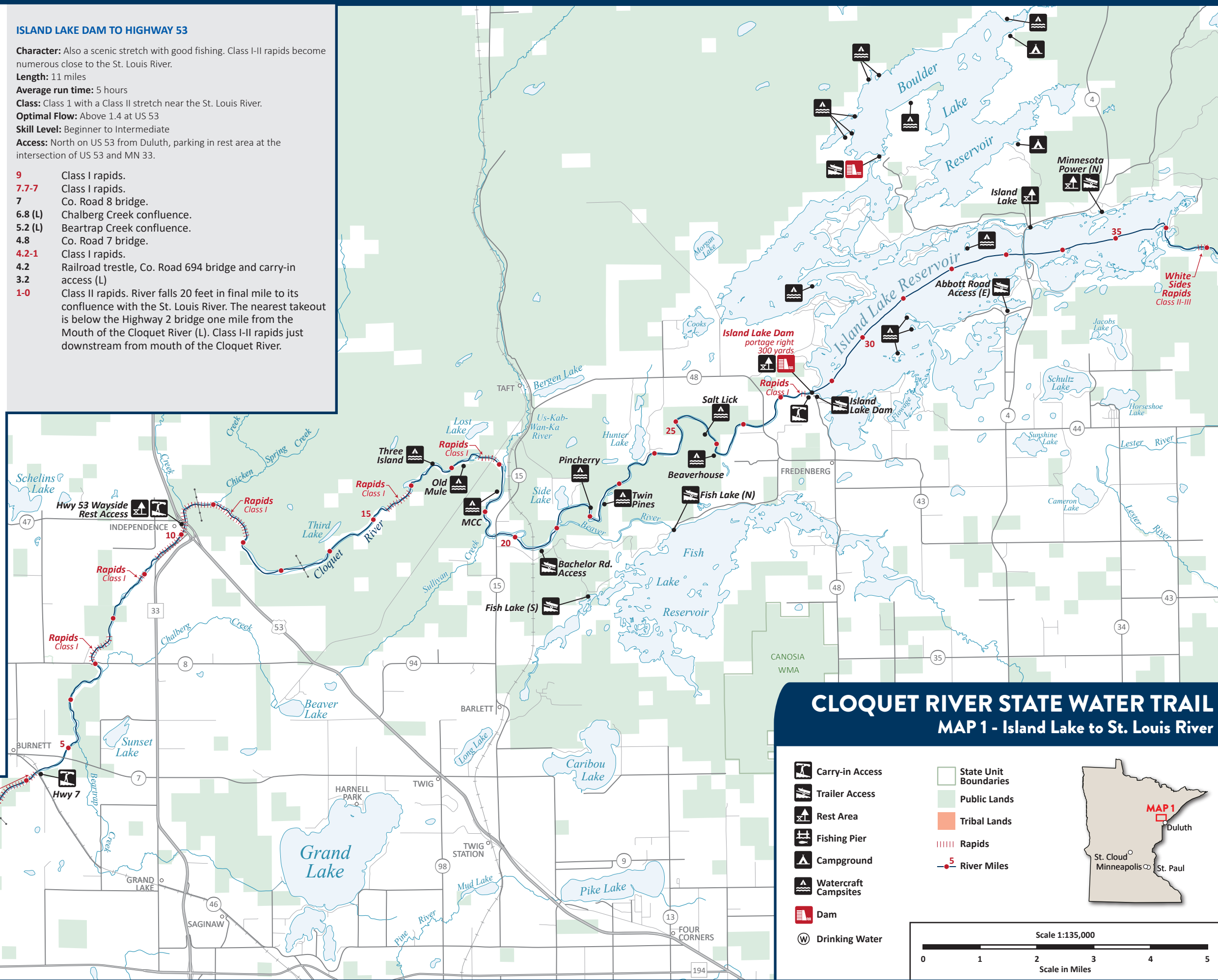
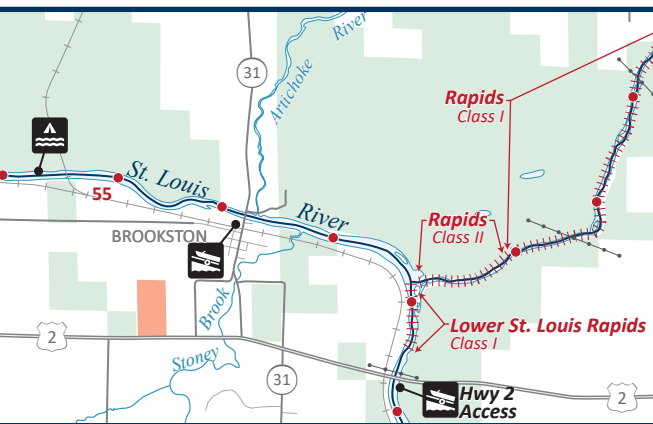
Class: Class 1 with a Class II stretch near the St. Louis River.

Optimal Flow: Above 1.4 at US 53

Skill Level: Beginner to Intermediate

Access: North on US 53 from Duluth, parking in rest area at the intersection of US 53 and MN 33.

- 9 Class I rapids.
- 7.7-7 Class I rapids.
- 7 Co. Road 8 bridge.
- 6.8 (L) Chalberg Creek confluence.
- 5.2 (L) Beartrap Creek confluence.
- 4.8 Co. Road 7 bridge.
- 4.2-1 Class I rapids.
- 4.2 Railroad trestle, Co. Road 694 bridge and carry-in access (L)
- 3.2 Class II rapids. River falls 20 feet in final mile to its confluence with the St. Louis River. The nearest takeout is below the Highway 2 bridge one mile from the Mouth of the Cloquet River (L). Class I-II rapids just downstream from mouth of the Cloquet River.



CLOQUET RIVER STATE WATER TRAIL

MAP 1 - Island Lake to St. Louis River

	Carry-in Access		State Unit Boundaries
	Trailer Access		Public Lands
	Rest Area		Tribal Lands
	Fishing Pier		Rapids
	Campground		River Miles
	Watercraft Campsites		
	Dam		
	Drinking Water		

Scale 1:135,000

Scale in Miles