

NORTHEAST QUAD

How To Use This Map

The purpose of this map is to illustrate the general locations and networks of Grant-in-Aid snowmobile trails in Northeast Minnesota. It is not meant to be a navigational tool.

1. Information about individual trails is available from the local contact person listed after the trail name under "Trail Information Sources."
2. The trails are listed in numerical order. The number adjacent to each trail on the map corresponds to the trail listings. To find the contact person for a specific trail, find the appropriate trail number in the listing.

DON'T GET LOST!

Navigate with your phone! The Avenza Maps® app uses GPS location tracking, so you can stay found, even off the grid. After downloading the app and map, no internet or cell service is needed.

Search "MNDNR" plus "snowmobile" in the Avenza app store to download our free maps, or scan the code here to download.



For More Information

For information on snowmobile trails; maps of state parks, forests and trails; weekly snow reports; and other information, contact:

DNR Information Center
500 Lafayette Road
St. Paul, MN 55155-4040
Twin Cities: 651-296-6157
Toll free: 1-888-MINNDNR (646-6367)

DNR Web Site
For snowmobile trail updates, including rules and regulations, snow reports, trail maps and more:
mndnr.gov

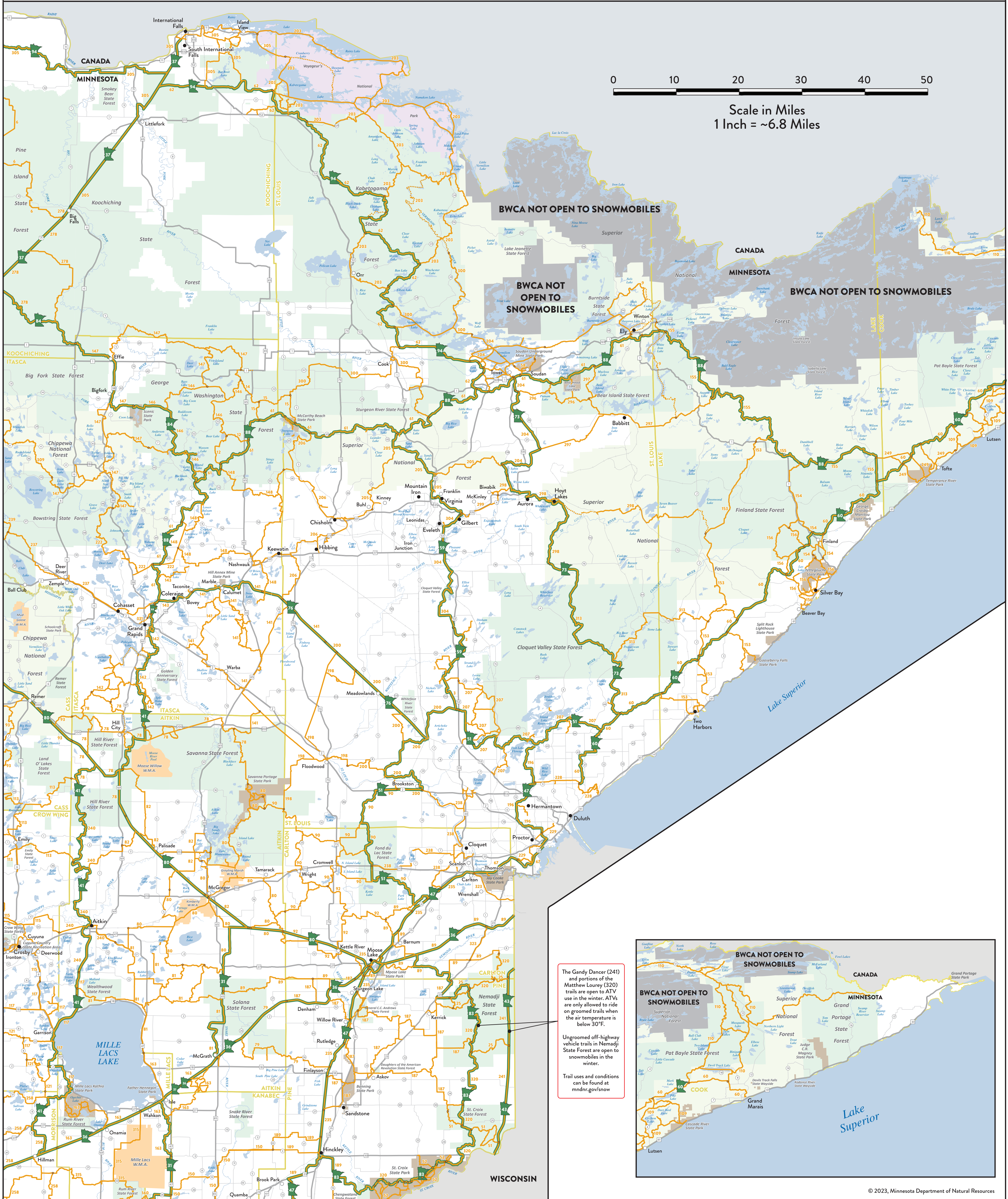
Also available from the DNR Information Center...

2023-2024 Minnesota Snowmobile Regulations



Map Legend

- Snowmobile Trails
- Snowmobile Club Trails (non-GIA)
- MnUSA Corridor (even numbers = east/west, odd numbers = north/south)
- Boundary Waters Canoe Area Boundary
- Trail Intersect
- State Forests
- National Forests
- State Parks
- National Parks
- Wildlife Management Areas
- Cities under 1,000 population
- Cities over 1,000 population
- County Boundaries



0 10 20 30 40 50

Scale in Miles
1 Inch = ~6.8 Miles

BWCA NOT OPEN TO SNOWMOBILES

BWCA NOT OPEN TO SNOWMOBILES

BWCA NOT OPEN TO SNOWMOBILES

The Gandy Dancer (241) and portions of the Matthew Lourey (320) trails are open to ATV use in the winter. ATVs are only allowed to ride on groomed trails when the air temperature is below 30°F. Ungroomed off-highway vehicle trails in Nemadji State Forest are open to snowmobiles in the winter. Trail uses and conditions can be found at mndnr.gov/snow

