





DAVID DILL/TACONITE - ELY TO PURVIS LAKE SEGMENT

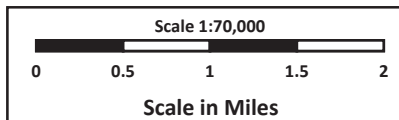
13 MILES

-  David Dill/Taconite State Trail - ATV/OHM
-  Other ATV/OHM
-  David Dill/Taconite State Trail (NOT OPEN TO MOTORIZED, EXCEPT SNOWMOBILE)
-  ATV/OHM City Connections

 Parking

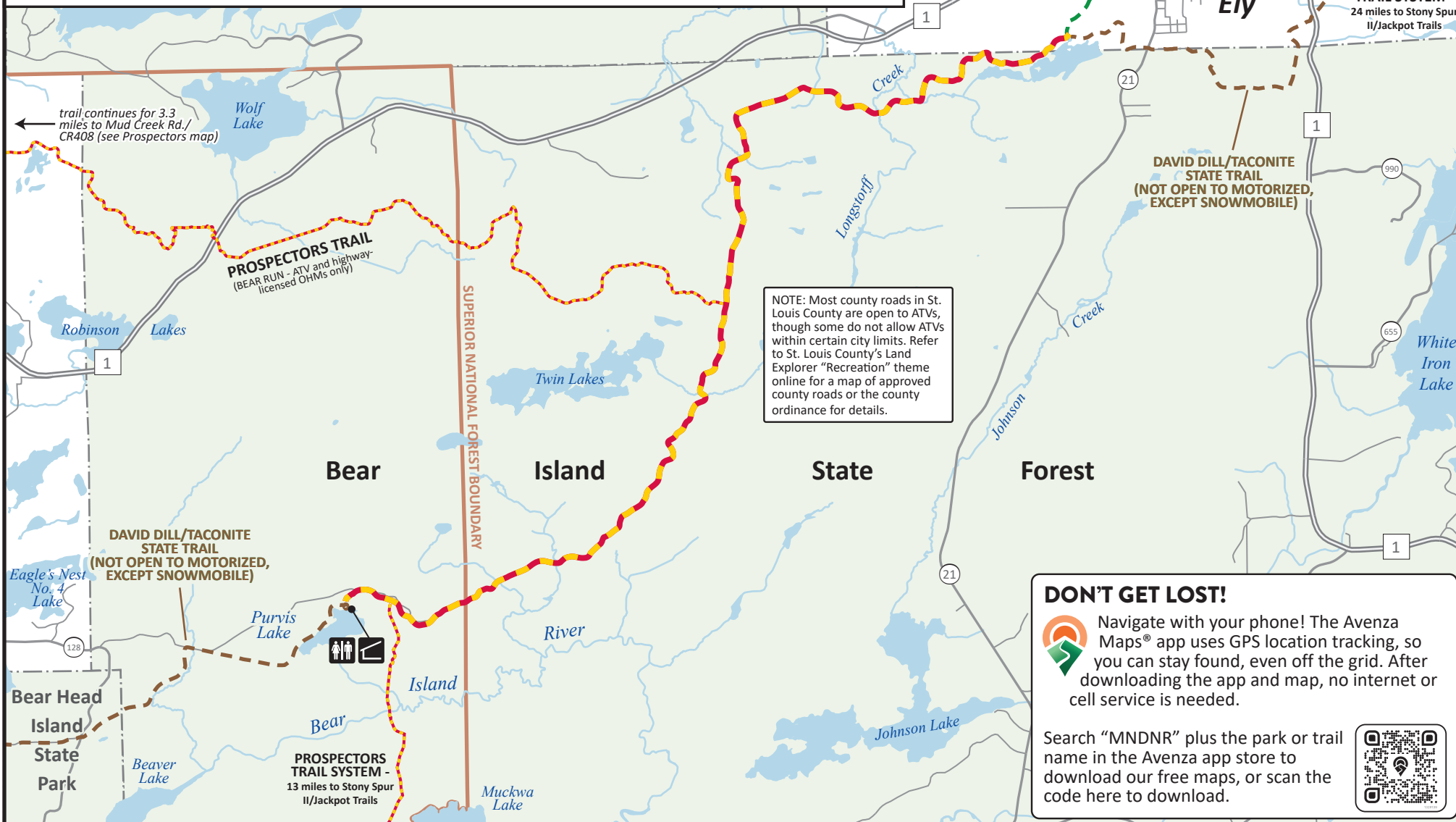
 Shelter

 Toliet



TRAILS MAINTAINED BY MN DNR: 218-300-7841

© 2025, Minnesota Department of Natural Resources



DON'T GET LOST!



Navigate with your phone! The Avenza Maps® app uses GPS location tracking, so you can stay found, even off the grid. After downloading the app and map, no internet or cell service is needed.

Search "MNDNR" plus the park or trail name in the Avenza app store to download our free maps, or scan the code here to download.

