

BLIND LAKE AND CONNECTOR TRAILS

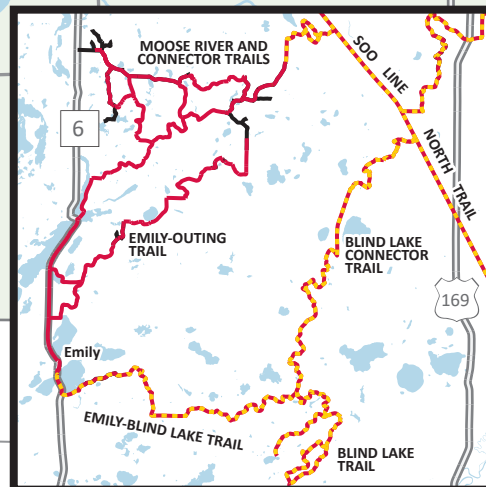
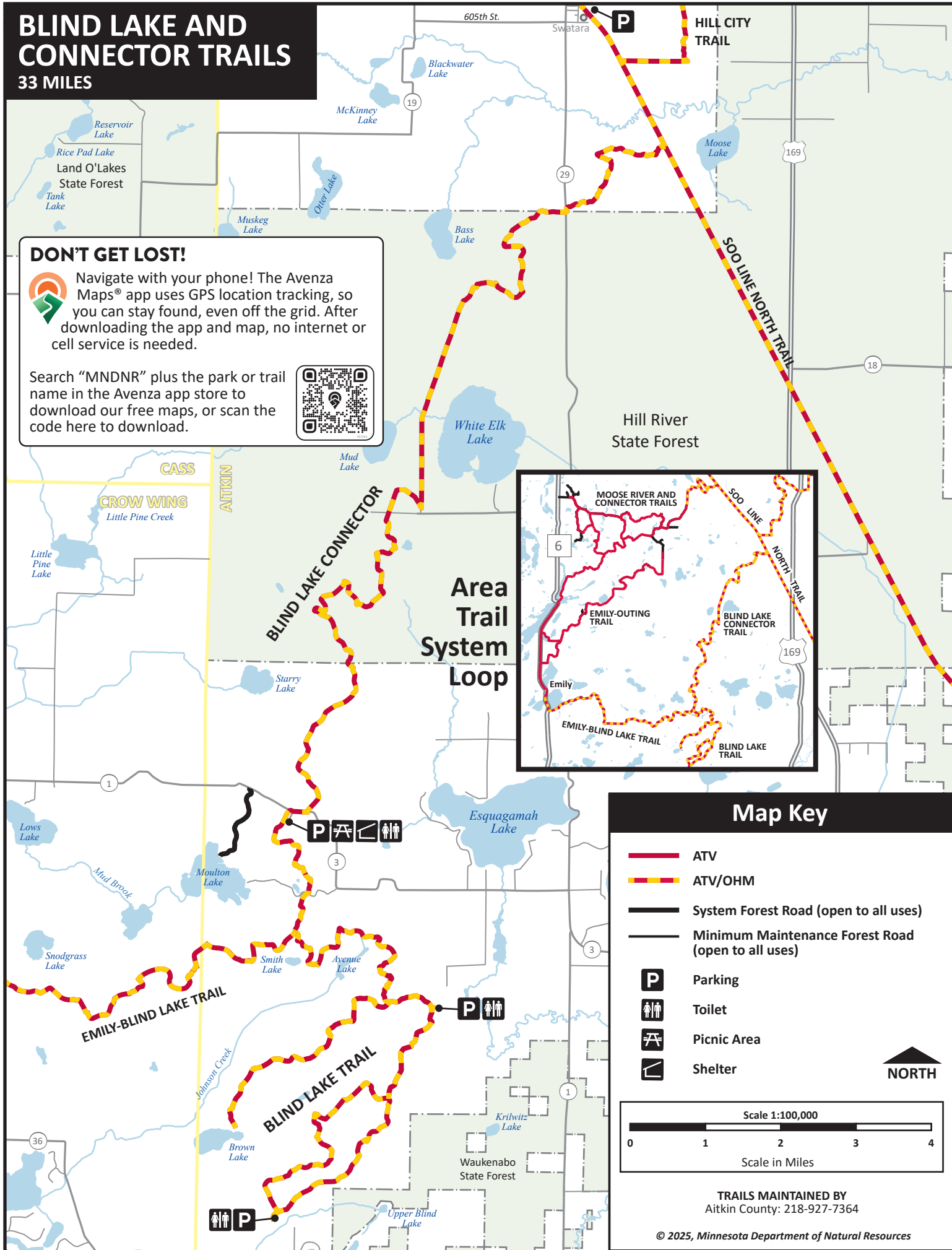
33 MILES

DON'T GET LOST!



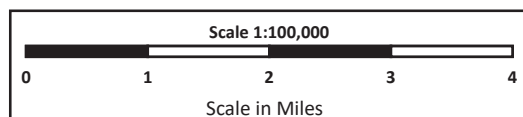
Navigate with your phone! The Avenza Maps® app uses GPS location tracking, so you can stay found, even off the grid. After downloading the app and map, no internet or cell service is needed.

Search "MNDNR" plus the park or trail name in the Avenza app store to download our free maps, or scan the code here to download.



Map Key

- ATV
- ATV/OHM
- System Forest Road (open to all uses)
- Minimum Maintenance Forest Road (open to all uses)
- P** Parking
- Toilet
- Picnic Area
- Shelter



TRAILS MAINTAINED BY
Aitkin County: 218-927-7364